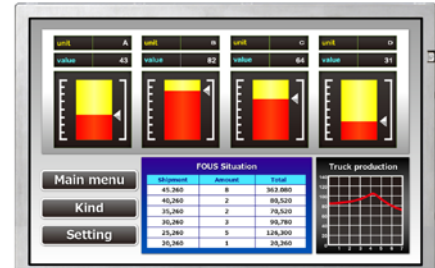


【Features】

- Vibration proof design
- Ultra-wide viewing angle (Super Fine TFT (SFT))
- Ultra high luminance
- Wide temperature range
- LVDS interface
- Reversible-scan direction
- Selectable 8-bit or 6-bit digital signals for data of RGB
- Narrow border
- Long life LED backlight^{*1}



Pixel	1,280(H) x 800(V)
Display area	216.96(H) x 135.6(V)mm 10.1 inches (26cm)
Display color	16,777,216 colors/ 262,144 colors
Pixel pitch	0.1695(H) x 0.1695(V)mm
Luminance	1,000cd/m ² (typ.)
Contrast ratio	800:1 (typ.)
Viewing angle ^{*2}	Up: 88°, Down: 88°, Left: 88°, Right: 88°
Response time ^{*3}	25ms (typ.)
Signal system	LVDS 1 port RGB 8-bit/6-bit
Power supply voltage	3.3V
Power consumption	6.7W (typ.)
Operating temperature	-40°C to +85°C
Storage temperature	-40°C to +85°C
Polarizer surface	Antiglare
Module size	W 235.4 (typ.) x H 153.8 (typ.) x D 12.6 (max.) mm
Weight	400g (typ.)
Backlight	LED backlight
LED driver	Not provided

*1: 70k hours long life LED

*2: Contrast ratio ≥ 10:1

*3: Ton+Toff (10%←→90%)

*All information is subject to change without notice.

*Screen images are simulated.

< Tianma Japan web site >

Japanese <http://www.tianma.co.jp/jp>

English <http://www.tianma.co.jp/en>