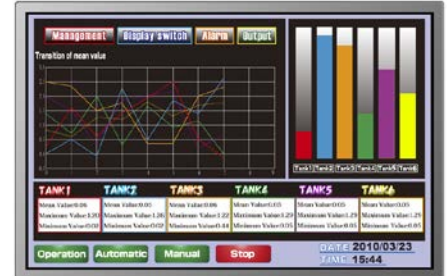


[Features]

- Vibration proof design
- Ultra-wide viewing angle (Super Fine TFT (SFT))
- Ultra high brightness
- High contrast
- Wide temperature range
- LVDS interface
- LED backlight



Pixel	1,280(H) x 800(V)
Display area	261.12(H) x 163.2(V)mm (12.1 inches (31cm) diagonal)
Display color	16,777,216 colors
Pixel pitch	0.204(H) x 0.204(V)mm
Luminance	1,100cd/m ² (typ.)
Contrast ratio	1,000:1 (typ.)
Viewing angle ^{*1}	Up: 88° (typ.), Down: 88° (typ.), Left: 88° (typ.), Right: 88° (typ.)
Response time ^{*2}	25ms (typ.)
Interface	LVDS 1 port, RGB 8-bit
Power supply voltage	LCD panel signal processing board: 3.3V (typ.)
Power consumption	8.5W (typ.)
Operating temperature	-30°C to +80°C
Storage temperature	-30°C to +80°C
Polarizer surface	Antiglare
Module size	277.7 (typ.) x 180.6 (typ.) x 9.2 (max.) mm
Weight	470g (typ.)
Backlight	LED backlight
LED driver	Not Provided

*1: Contrast ratio ≥ 10:1

*2: Ton+Toff (10%←→90%)

*All information is subject to change without notice.

*Screen image is simulated.

<Tianma Japan web site>

Japanese <https://www.tianma.co.jp/jp>

English <https://www.tianma.co.jp/en>

Published date: Nov. 2019

©Tianma Japan, Ltd. 2019