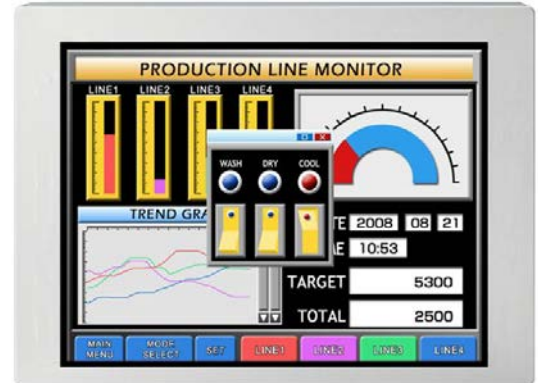


[Features]

- Wide viewing angle
- Wide temperature range
- Reversible-scan direction
- LVDS interface
- Long life LED backlight*¹ built in LED driver



Pixel	640(H) x 480(V)
Display area	115.2(H) x 86.4(V)mm (5.7 inches (14cm) diagonal)
Display color	16,194,277 colors
Pixel pitch	0.18 (H) x 0.18 (V)mm
Luminance	550cd/m ² (typ.)
Contrast ratio	900:1 (typ.)
Viewing angle* ¹	Up: 80° (typ.), Down: 80° (typ.), Left: 80° (typ.), Right: 80° (typ.)
Response time* ²	18ms (typ.)
Interface	LVDS 1port, RGB 8-bit
Power supply voltage	LCD panel signal processing board: 3.3V, LED driver: 12.0V
Power consumption	2.4W (typ.)
Operating temperature	-30°C to +85°C
Storage temperature	-30°C to +85°C
Polarizer surface	Antiglare
Module size	144.0 (typ.) x 104.6 (typ.) x 12.8 (max.) mm
Weight	150g (typ.)
Backlight	LED backlight
LED driver	Built-in

*1: 70k hours long life LED

*2: Contrast ratio ≥ 10:1

*3: Ton+Toff (10%←→90%)

*All information is subject to change without notice.

*Screen image is simulated.

<Tianma Japan web site>

Japanese <https://www.tianma.co.jp/jp>

English <https://www.tianma.co.jp/en>