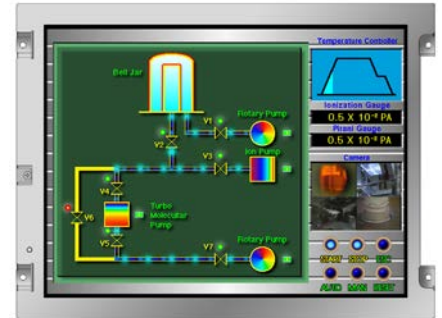


## [Features]

- High luminance
- High contrast
- **ColorXcell** technology (Color Enhancement)
- Wide viewing angle
- Wide temperature range
- LVDS interface
- Reversible-scan direction
- Selectable 8-bit or 6-bit digital signals for data of RGB
- Long life LED backlight<sup>\*1</sup>
- Replaceable lamp for backlight



<b>Pixel</b>	640(H) x 480(V)
<b>Display area</b>	170.88(H) x 128.16(V)mm (8.4 inches (21cm) diagonal)
<b>Display color</b>	16,777,216 colors/ 262,144 colors
<b>Pixel pitch</b>	0.267(H) x 0.267(V)mm
<b>Luminance</b>	500cd/m <sup>2</sup> (typ.)
<b>Contrast ratio</b>	1,000:1 (typ.)
<b>Viewing angle<sup>*2</sup></b>	Up: 80°,Down: 80°,Left: 80°,Right: 80°
<b>Response time<sup>*3</sup></b>	18ms (typ.)
<b>Signal system</b>	LVDS 1port RGB 8-bit/6-bit
<b>Power supply voltage</b>	3.3V
<b>Power consumption</b>	3.1W (typ.)
<b>Operating temperature</b>	-30°C to +80°C
<b>Storage temperature</b>	-30°C to +80°C
<b>Polarizer surface</b>	Clear
<b>Module size</b>	200.0 (typ.) x 152.0 (typ.) x 8.7 (max.)mm
<b>Weight</b>	260g (typ.)
<b>Backlight</b>	LED backlight (Replaceable)
<b>LED driver</b>	104PW03F

\*1: 70k hours long life LED

\*2: Contrast ratio ≥ 10:1

\*3: Ton+Toff (10%←→90%)

\*All information is subject to change without notice.

\*Screen images are simulated.

<Tianma Japan web site>

Japanese <https://www.tianma.co.jp/jp>

English <https://www.tianma.co.jp/en>