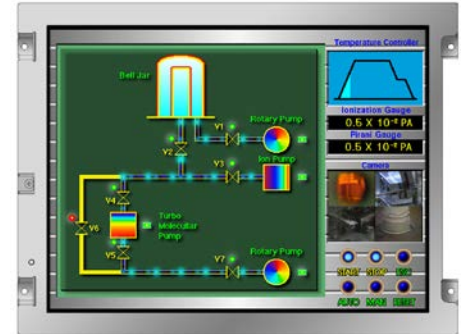


[Features]

- High luminance
- High contrast
- **ColorXcell** technology (Color Enhancement)
- Wide viewing angle
- Wide temperature range
- LVDS interface
- Reversible-scan direction
- Selectable 8-bit or 6-bit digital signals for data of RGB
- Long life LED backlight^{*1}
- Replaceable lamp for backlight



Pixel	640(H) x 480(V)
Display area	170.88(H) x 128.16(V)mm (8.4 inches (21cm) diagonal)
Display color	16,777,216 colors/ 262,144 colors
Pixel pitch	0.267(H) x 0.267(V)mm
Luminance	500cd/m ² (typ.)
Contrast ratio	1,000:1 (typ.)
Viewing angle ^{*3}	Up: 80°,Down: 80°,Left: 80°,Right: 80°
Response time ^{*4}	18ms (typ.)
Signal system	LVDS 1port RGB 8-bit/6-bit
Power supply voltage	3.3V
Power consumption	3.1W (typ.)
Operating temperature	-30°C to +80°C
Storage temperature	-30°C to +80°C
Polarizer surface	Antiglare
Module size	200.0 (typ.) x 152.0 (typ.) x 8.7 (max.)mm
Weight	260g (typ.)
Backlight	LED backlight (Replaceable)
LED driver	104PW03F

*1: 70k hours long life LED

*2: Contrast ratio ≥ 10:1

*3: Ton+Toff (10%←→90%)

*All information is subject to change without notice.

*Screen images are simulated.

<Tianma Japan web site>

Japanese <https://www.tianma.co.jp/jp>

English <https://www.tianma.co.jp/en>