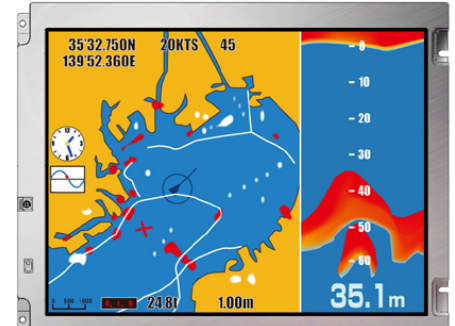


[Features]

- **ColorXcell^{*1}**
- Adoption of T-EVT(Transmissive-Enhanced View TFT))
- High luminance(800cd/m²)
- High contrast(900:1)
- 16.77M/262K colors (LVDS RGB 8-bit/6-bit)
- Wide temperature(-30°C to +80°C)
- Reversible-scan direction
- Long-life LED backlight^{*2}



Pixel	800(H) x 600(V)
Display area	211.2(H) x 158.4(V) mm 10.4 inches (26cm)
Display color	16,777,216 colors/ 262,144 colors
Pixel pitch	0.264(H) x 0.264(V) mm
Luminance	800cd/m ² (typ.)
Contrast ratio	900:1 (typ.)
Viewing angle ^{*3}	Up: 80°,Down: 80°,Left: 80°,Right: 80°
Response time ^{*4}	18ms (typ.)
Signal system	LVDS 1-port RGB 8-bit/6-bit
Power supply voltage	3.3V
Power consumption	6.3W (typ.)
Operating temperature	-30°C to +80°C
Storage temperature	-30°C to +80°C
Polarizer surface	Clear + Antireflection
Module size	243.0 (typ.) x 185.1 (typ.) x 11.0 (max.) mm
Weight	475g (typ.)
Backlight	LED backlight(Replaceable)
LED driver	104PW01F

*1: ColorXcell Technology (Color Enhancement)

*2: 70k hours long life LED

*3: Contrast ration ≥ 10:1

*4: Ton+Toff (10%←→90%)

*All information is subject to change without notice.

*Screen images are simulated.

<Tianma Japan web site>

Japanese <https://www.tianma.co.jp/jp>

English <https://www.tianma.co.jp/en>